



**Escambia County Health Department
1295 W. Fairfield Drive**

The Role of Public Health in Escambia County, Florida

**Presented by:
John J. Lanza, MD, PhD, MPH, FAAP
Director**



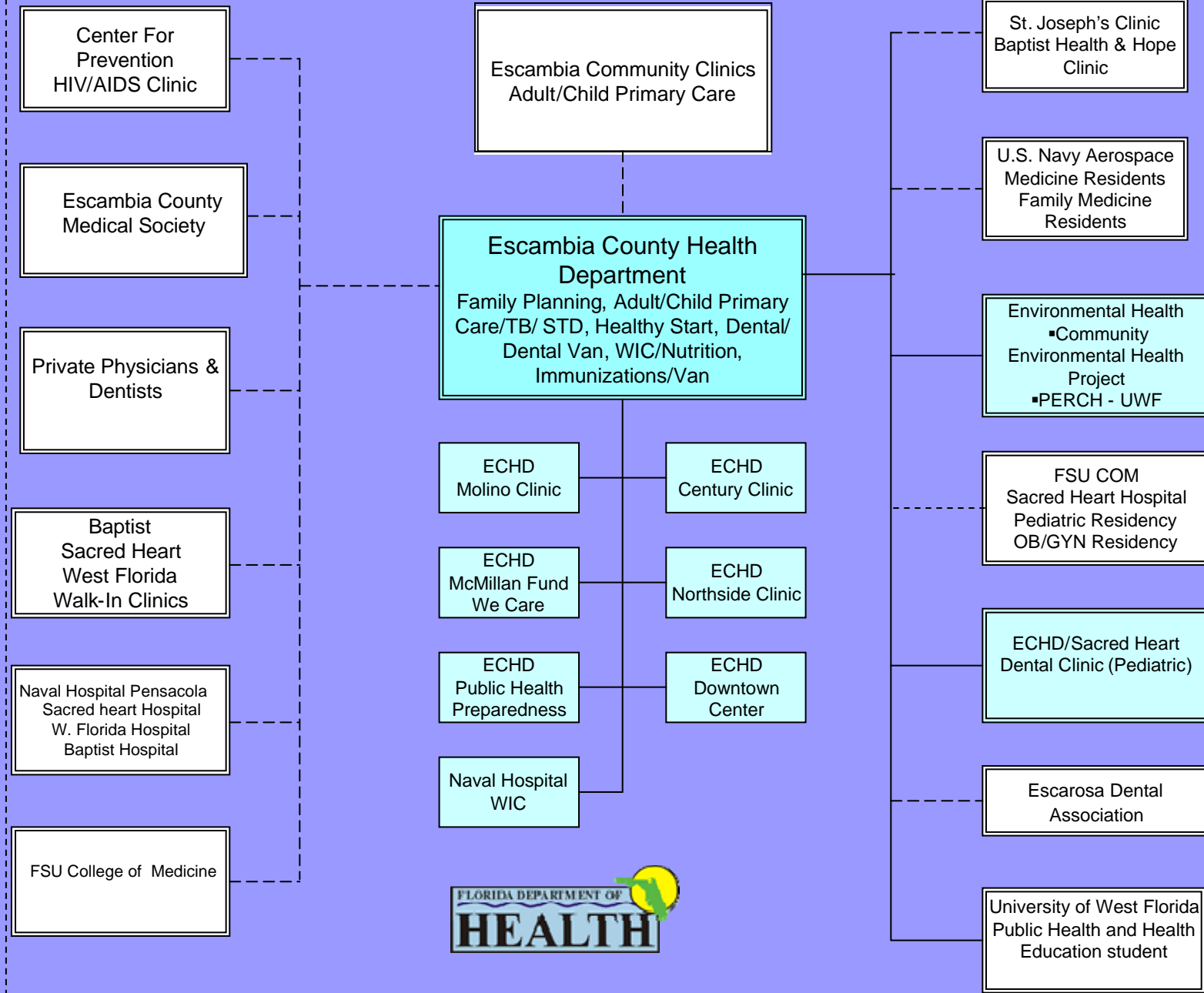
History of the ECHD



- Founded in 1821 by Territorial Governor Andrew Jackson to control tropical diseases brought in by naval vessels
- In 1953, Escambia BCC passed ordinance establishing ECHD as a continuing county function
- Continuously providing services to Escambia County, FL residents for over 188 years



Escambia County Health Care System



Escambia County Health Department Goals

- Surveillance and prevention of diseases of public health significance (infectious diseases, obesity, smoking-related illnesses)
- Monitor and regulate activities to prevent diseases of environmental origin.
- Improve maternal/child health outcomes.
- Improve access to basic preventive, acute and ongoing health care services for children and women who have difficulty obtaining this care
- Implement prevention methodologies to change health behaviors such as social marketing
- Community health assessment and improvement



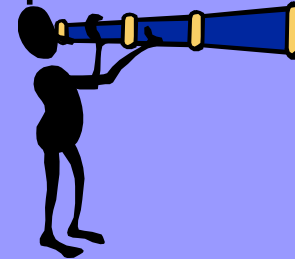
ECHD Snapshot



- Locations for service: Five
- Number of Staff December 10, 2009: 413
- Number of services provided CFY2008-2009: 1,313,643
- Budget SFY 2009-10: \$23,844,022

ECHD Public Health Services

- **Epidemiology:** Conduct community surveillance for disease occurrence and use of health education to prevent future disease outbreaks.



- **Public Health Nursing:** Provides coordination of all public health nursing activities in the county with a liaison to state and national programs.



- **School Health:** Oversees and provides health education, counseling, nursing care, and medication dispensing services for more than 52,000 students. Nurse-in-every-School Program.



ECHD Public Health Services

- **Immunization:** Offers a vaccination program designed to prevent illnesses in children and adults. Vaccine For Children Program.
- **Improved Pregnancy Outcome Program (IPOP):** Clients receive their presumptive Medicaid eligibility and are referred to physicians for pregnancy care.
- **Healthy Start:** Provides prenatal screening for physician referrals, prenatal classes, family planning and counseling, smoking cessation, and newborn health monitoring.



ECHD Public Health Services

- **Integrated Clinic/Pregnancy Planning/Child Health:** Health care services to children, adolescents, and adults as part of family health, pregnancy planning, and women's health services.
- **HIV/AIDS:** Offers support services such as counseling and testing, medications, HIV/AIDS health education, and referrals for medical care and case management.
- **AIDS Drug Assistance Program (ADAP):** A program designed to assist persons with medications needed for control of the HIV virus and treatment of side effects and opportunistic infections.



ECHD Public Health Services

- **Epilepsy/Insulin Issuance Program:** Provides insulin and epilepsy medication to Escambia County, FL residents.
- **Florida Breast And Cervical Cancer Program (FBCCP):** Provides patient health education and cancer prevention for uninsured women 50 to 64 years old in Escambia and surrounding Florida counties.



ECHD Public Health Services

- **Environmental Health:** Provides a wide variety of services including septic system permitting and inspection, community food programs, beach water quality, environmental health complaint investigation, SuperAct site inspections, and the petroleum tanks clean-up program.
- **CATE/CEHP/PERCH:** Provides health screenings for those living near Superfund sites and conducts research on the environmental health of the community.



ECHD Public Health Services

- **Public Health Preparedness:**
Provides coordination of health and medical services throughout the county/region in times of disaster. Plans for and manages public health responses to disaster.
- **Special Needs Shelter:**
Serves community members with special health care needs in times of emergencies such as hurricanes, floods, pandemics, and terrorism.



ECHD Public Health Services

- **Dental Health:** Provides dental health education and services to Medicaid eligible children (including Head Start) and adults as well as HIV/AIDS patients. Other adults are served through a partnership with Sacred Heart Hospital and WFLAHEC.



- **WeCare Program:** Provides patient referrals for specialty medical and surgical care to a network of volunteer physicians.
- **Public Health Nutrition:** Provides breastfeeding counseling and nutrition support under the Federal WIC program.

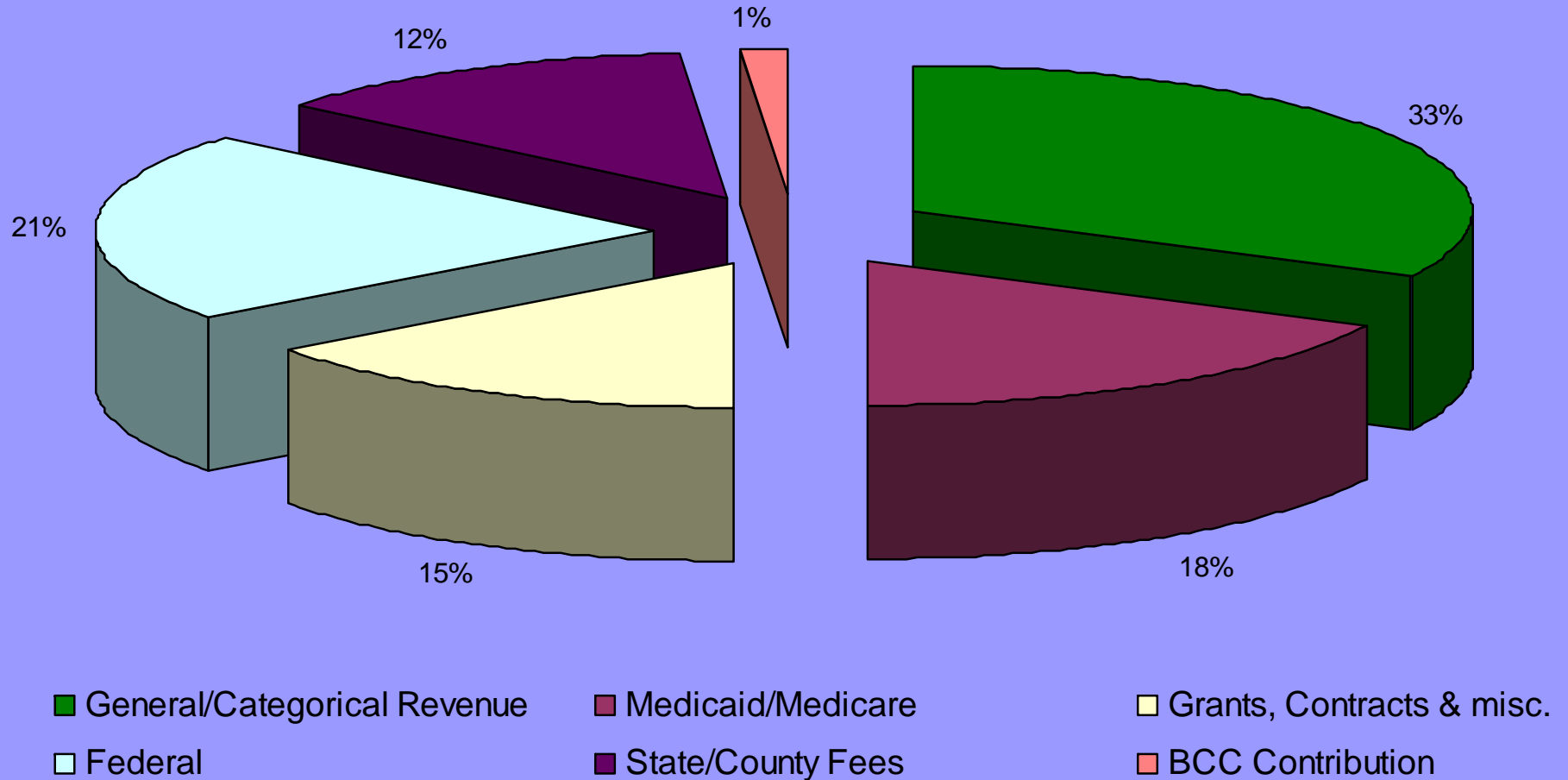


Sources of ECHD Revenues

2009-10

Source	Contribution
General/Categorical Revenue	\$7,292,099
Federal	\$4,810,171
State/County Fees	\$2,811,092
Medicaid/Medicare	\$3,965,773
BCC Contribution	\$300,029
Grants, Contracts & misc.	\$3,340,235
Total Revenue	\$22,519,399

ECHD Sources of Revenue 2009-2010



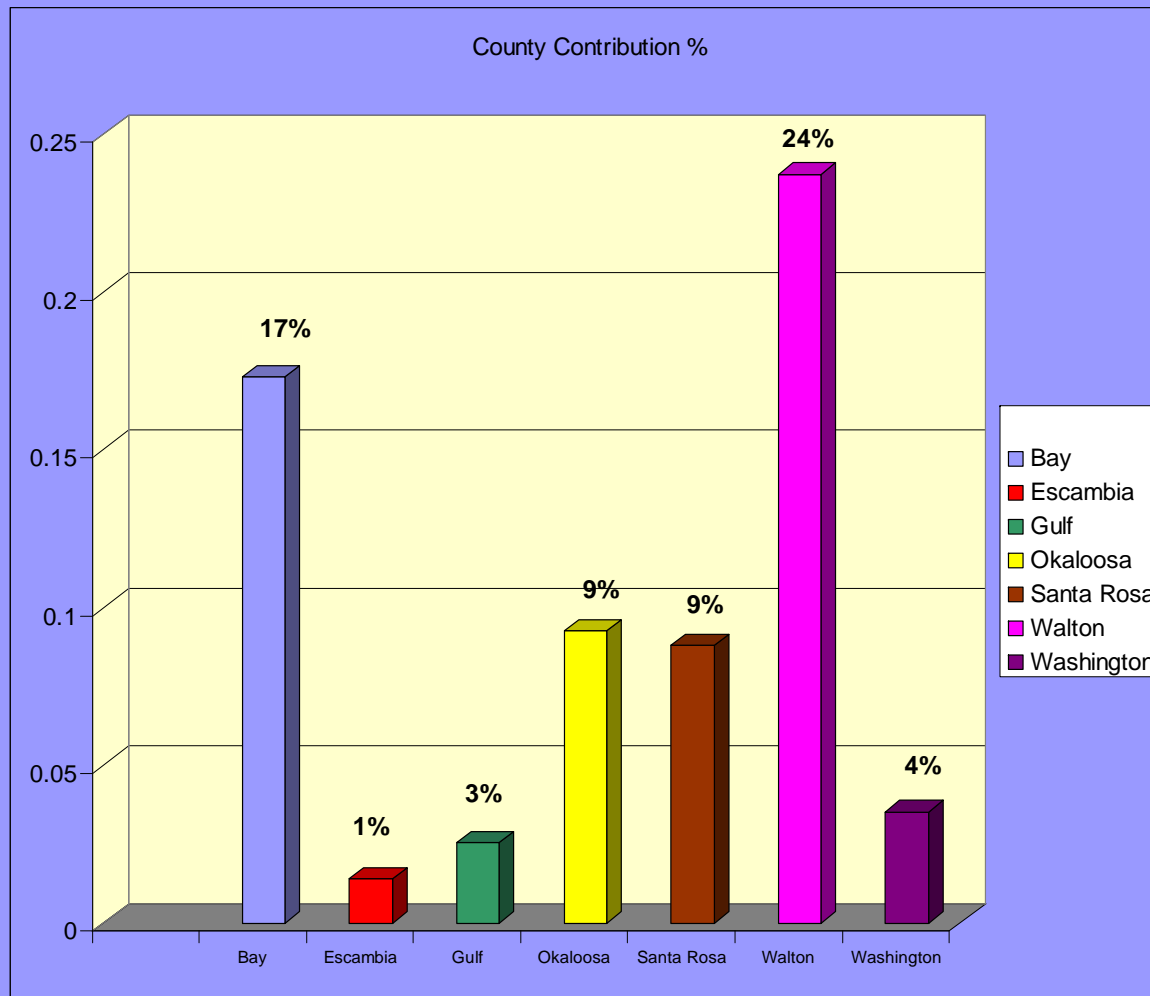
Sources of ECHD Revenue

Source	2009-2010	2008-2009	1985-1986	Δ 85/86-09/10
State/Federal	\$12,102,270	\$11,508,659	\$3,203,617	+278%
Fees/Contract	\$10,177,100	\$9,792,861	\$1,101,000	+815%
BCC Contribution	\$300,029	\$300,029	\$585,000	- 49%
Total Revenue	\$22,519,399	\$21,601,549	\$4,889,617	+361%
BCC % CHD Total Revenue	1.3%	1.4%	12%	

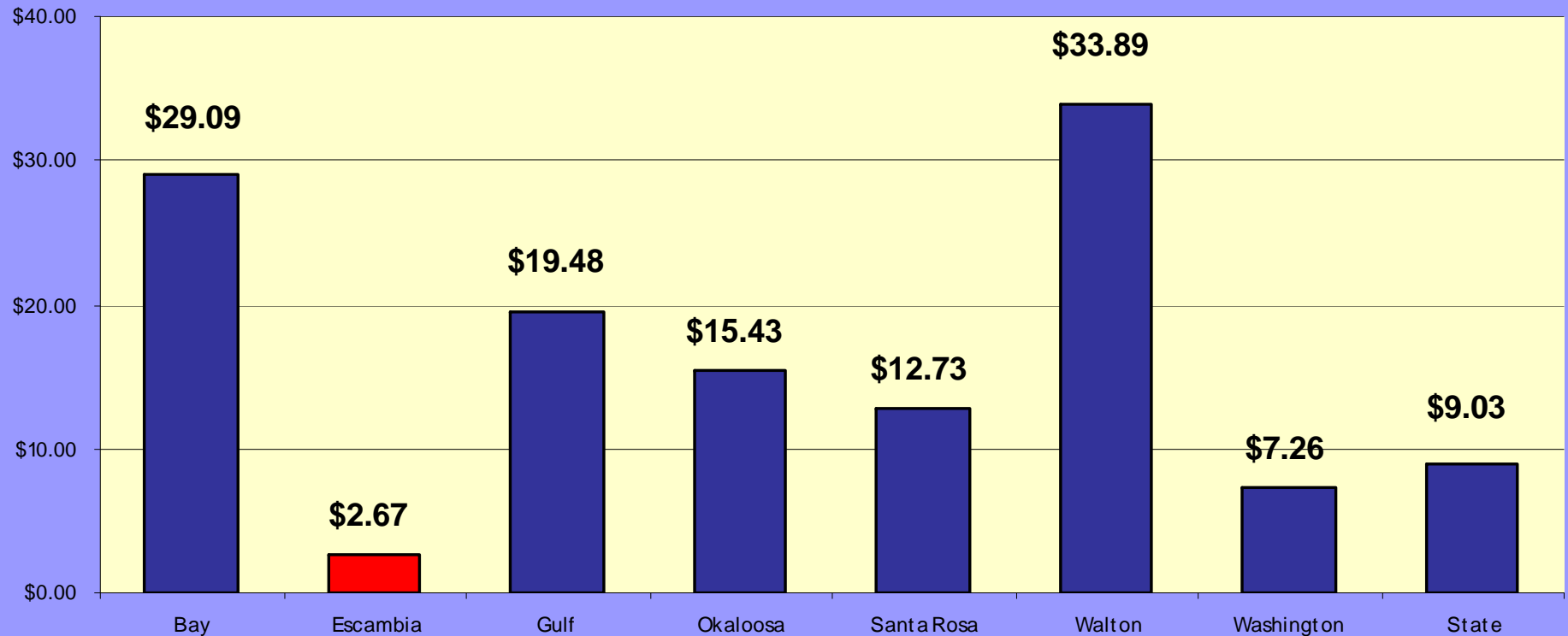
Recent History of County Contributions to ECHD

Year	County Contribution
2009-2010	\$300,029
2008-2009	\$300,029
2007-2008	\$300,029
2006-2007	\$435,024
2005-2006	\$430,922
2000-2001	\$430,988
1996-1997	\$343,823
1995-1996	\$308,276
1993-1994	\$275,000
1991-1992	\$308,333
1990-1991	\$563,215
1985-1986	\$585,000
1970-1971	\$365,547

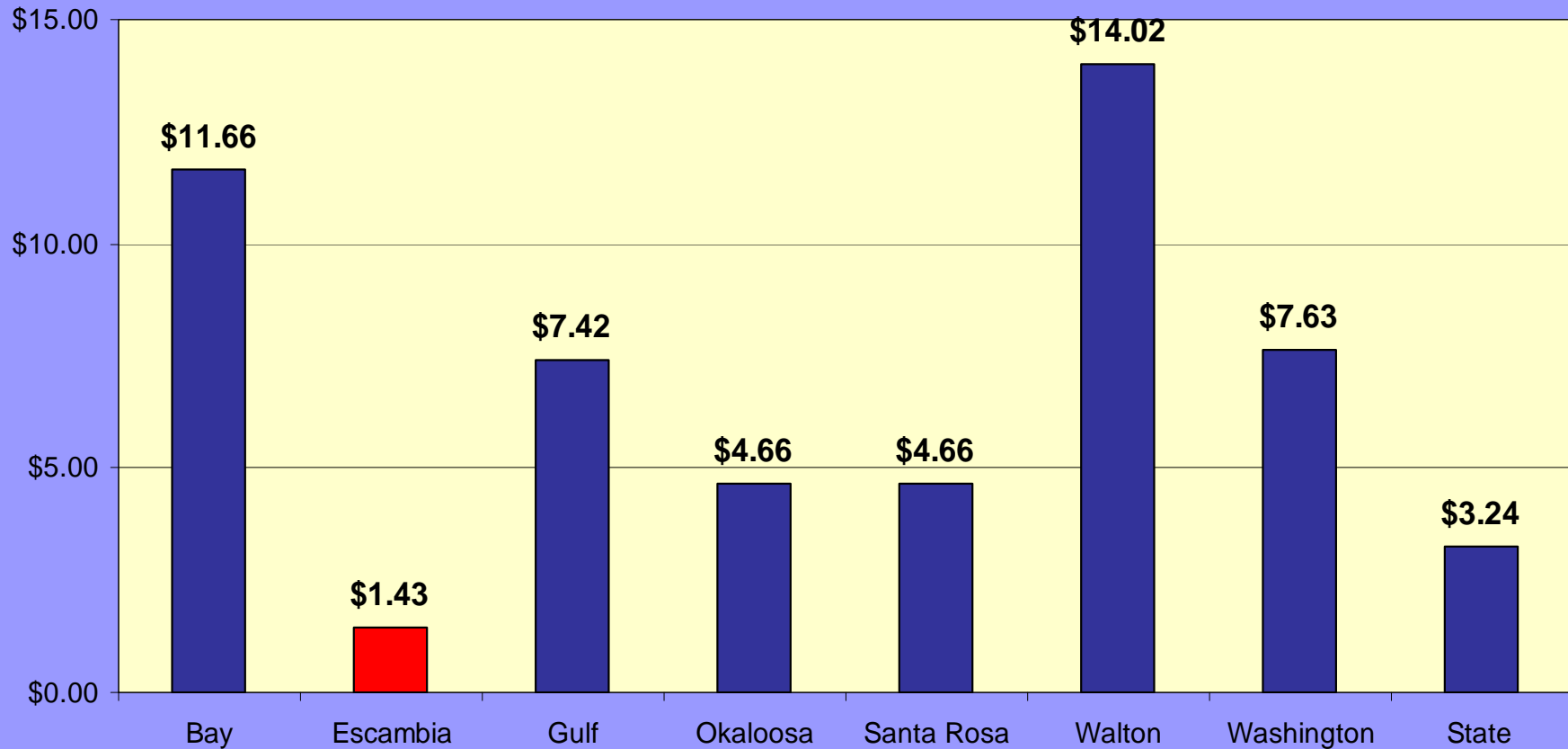
BCC Contribution, Percent of Planned CHD Revenue (2008-2009)



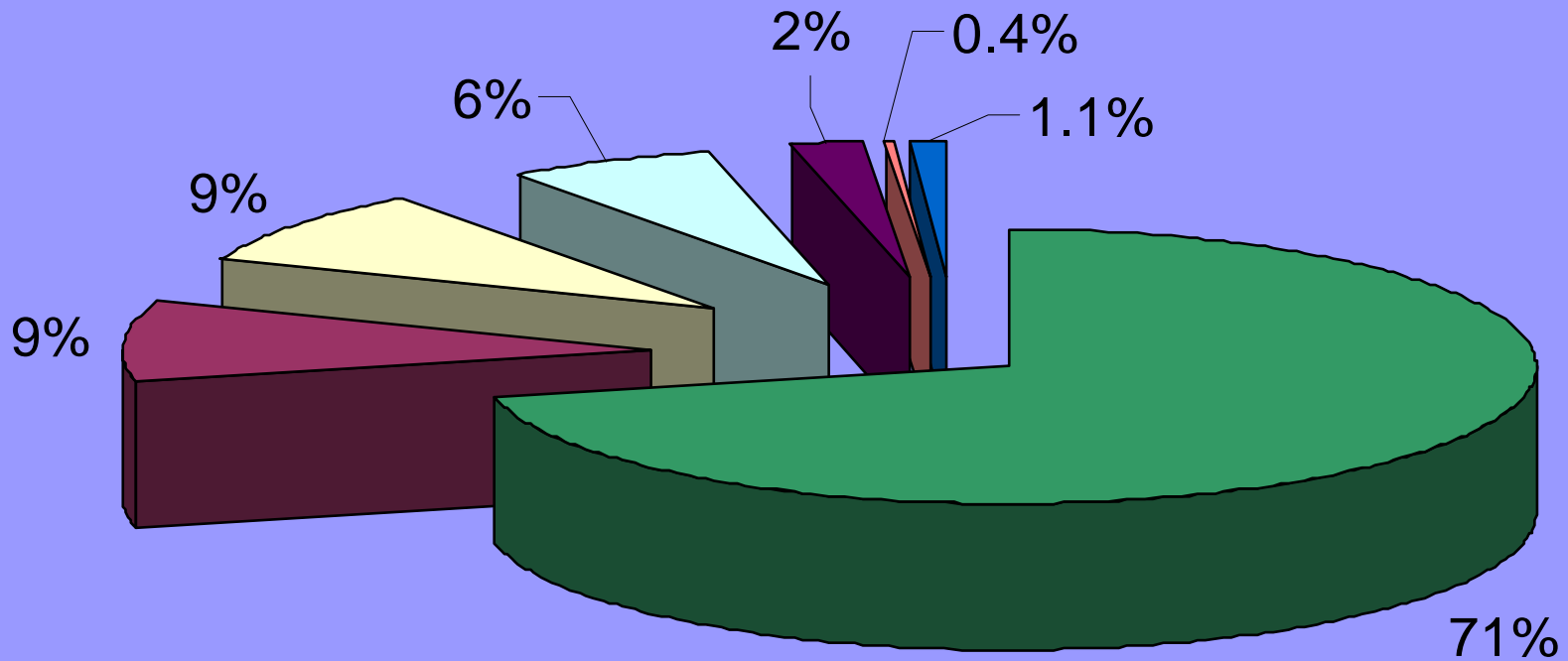
Per Capita BCC Contribution for Low Income Persons <200% of FPL (2008-09)



Per Capita BCC Contribution by Total Population (2008-2009)



Where is ECHD Money Spent? (2009-10)



- Salary and Fringe
- Expenses
- Grants and Contracts
- Other Personal Services
- Construction/Renovation
- Operating Capital Outlay
- DOH Fee

General Revenue Reductions to ECHD

Year	Reduction
2009-10	\$ 1,030,862
2008-09	\$ 813,884
2007-08	\$ 311,322
2006-07	\$ 690,791
2005-06	\$ 94,696
2004-05	\$ 918,594
2003-04	\$ 244,312
2002-03	\$ 512,315
2001-02	\$ 76,736
2000-01	\$ 280,486
Total past 10 yr	\$4,974,028



SUMMARY



- ECHD continuously providing public health services since 1821.
- Services primarily directed to the prevention of diseases and conditions.
- Receives funding from a variety of sources.
- Seeks to expand prevention and outreach services to the community.

Contact Information

John J. Lanza, MD, PhD, MPH, FAAP

Florida Department of Health

Escambia County Health Department

850.595.6557

john_lanza@doh.state.fl.us

www.EscambiaHealth.com

